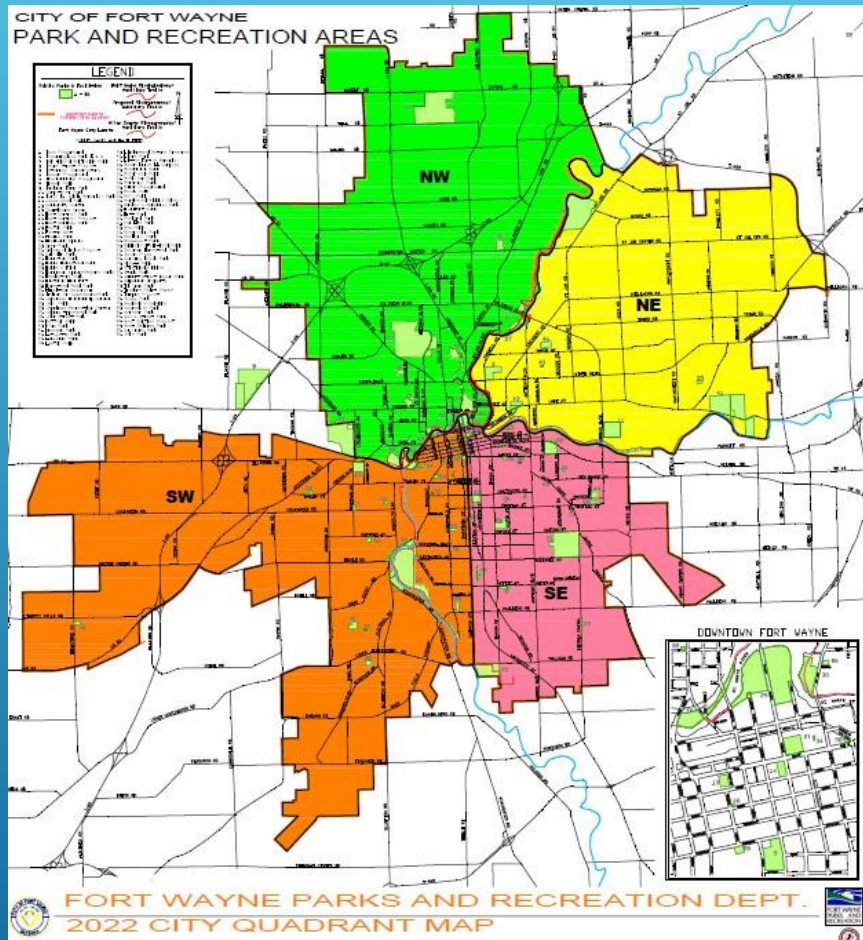
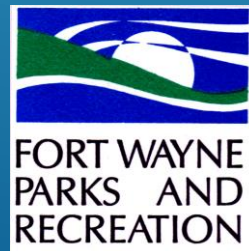


FORT WAYNE BOARD OF PARK COMMISSIONERS



A Showcase of Our Parks: Northwest Quadrant

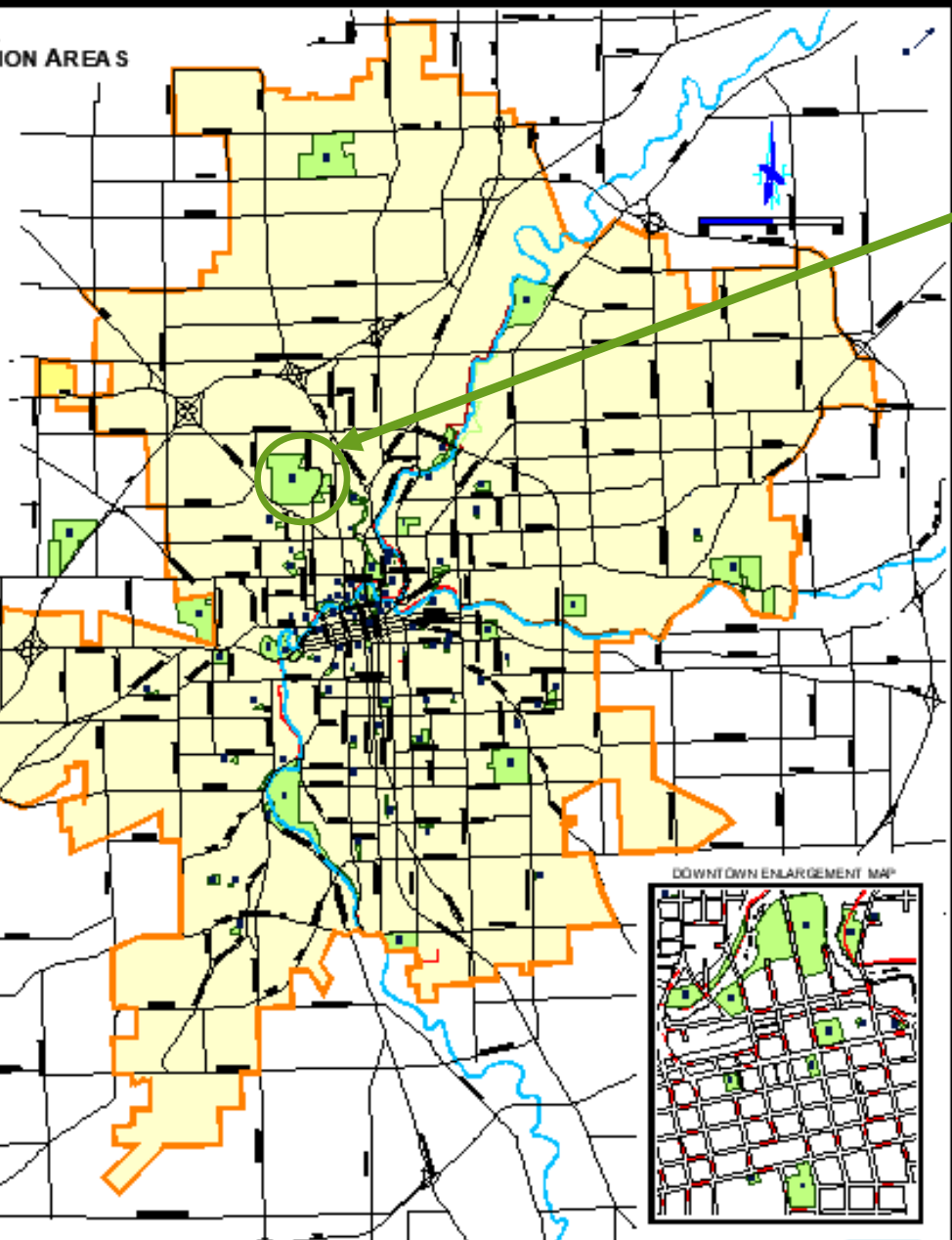
- Franke Park
- Franklin Park
- Gren Park



CITY OF FORT WAYNE
PARKS AND RECREATION AREAS

MAP LEGEND

	City of Fort Wayne Parks and Recreation Areas
	City of Fort Wayne Parks and Recreation Boundaries
	City of Fort Wayne City Limits
	Waterways
	Streets
	Railroads
	Highways
	Interstates
	State Routes
	County Routes
	Local Routes
	Other Routes
	Other



DOWNTOWN ENLARGEMENT MAP



FRANKE PARK

3411 Sherman Blvd.



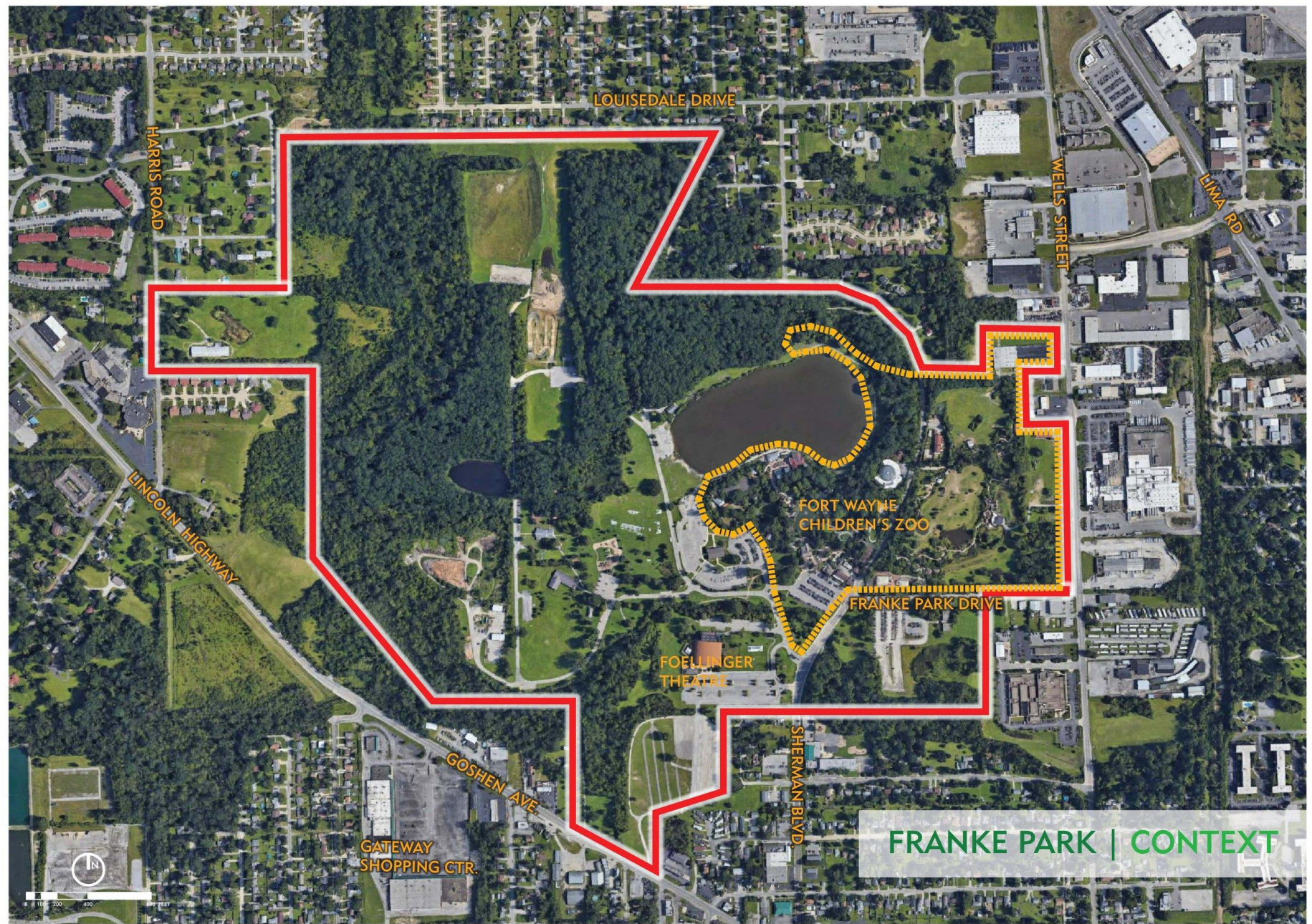
2022 FORT WAYNE PARKS MAP



FRANKE PARK

Since 1921

Size in Acres: 339.4



FRANKE PARK | CONTEXT

FRANKE PARK

History:

In 1921, 80 acres were donated by John B. Franke the president of the Perfection Biscuit Company. Over the course of 90 years the first 80 acres have flourished into 339.4 acres.

In 1952 a Bird and Wildlife Sanctuary opened to the public when Fred B. Shoaff donated 54.36 acres to become part of Franke Park. This land later developed into the Fort Wayne Childrens Zoo.

The zoo officially opened in 1965.



FRANKE PARK – APPROX. 1975



Franke Park's History



*News-Sentinel Outdoor Theater, Franke Park,
Fort Wayne, Indiana*



THE PARK TODAY

Today Franke Park is home to not only the Fort Wayne Children's Zoo but also includes:

- Three Rental Pavilions (2 available year-round)
- The Foellinger Theatre
- The Franke Day Camp
- BMX Track
- Miles of hiking/bike trails
- Shoaff Lake
- Playground





Franke Pavilion #1



Pavilion #2



Pond Pavilion



Playground

Foellinger Theatre



The Foellinger Theatre in Franke Park was constructed in 1949 as a gift to the community from Helene Foellinger in memory of her father, Oscar G. Foellinger, former publisher of the Fort Wayne News Sentinel.

The original theatre burned in the 1970's and this new theatre was built in 1976.

The theatre seats 2,751 fans.



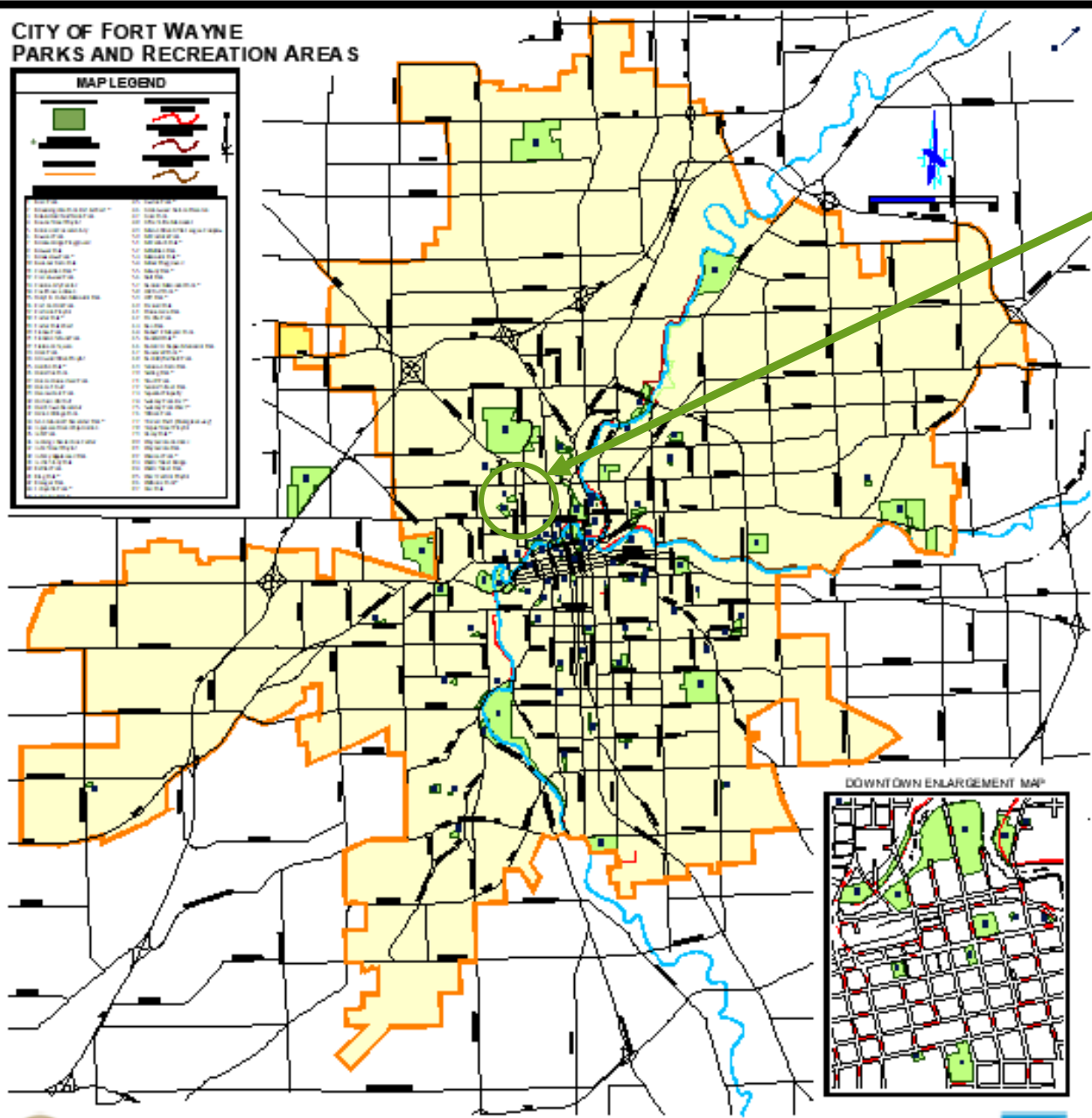


The Fort Wayne BMX Track

CITY OF FORT WAYNE
PARKS AND RECREATION AREAS

MAP LEGEND

1. Adams Park	11. Parkview Park
2. Alvin Park	12. Parkview Park
3. Anderson Park	13. Parkview Park
4. Anderson Park	14. Parkview Park
5. Anderson Park	15. Parkview Park
6. Anderson Park	16. Parkview Park
7. Anderson Park	17. Parkview Park
8. Anderson Park	18. Parkview Park
9. Anderson Park	19. Parkview Park
10. Anderson Park	20. Parkview Park



FRANKLIN SCHOOL PARK

1903 Saint Marys Ave.



2022 FORT WAYNE PARKS MAP



FRANKLIN SCHOOL PARK

Since 2016

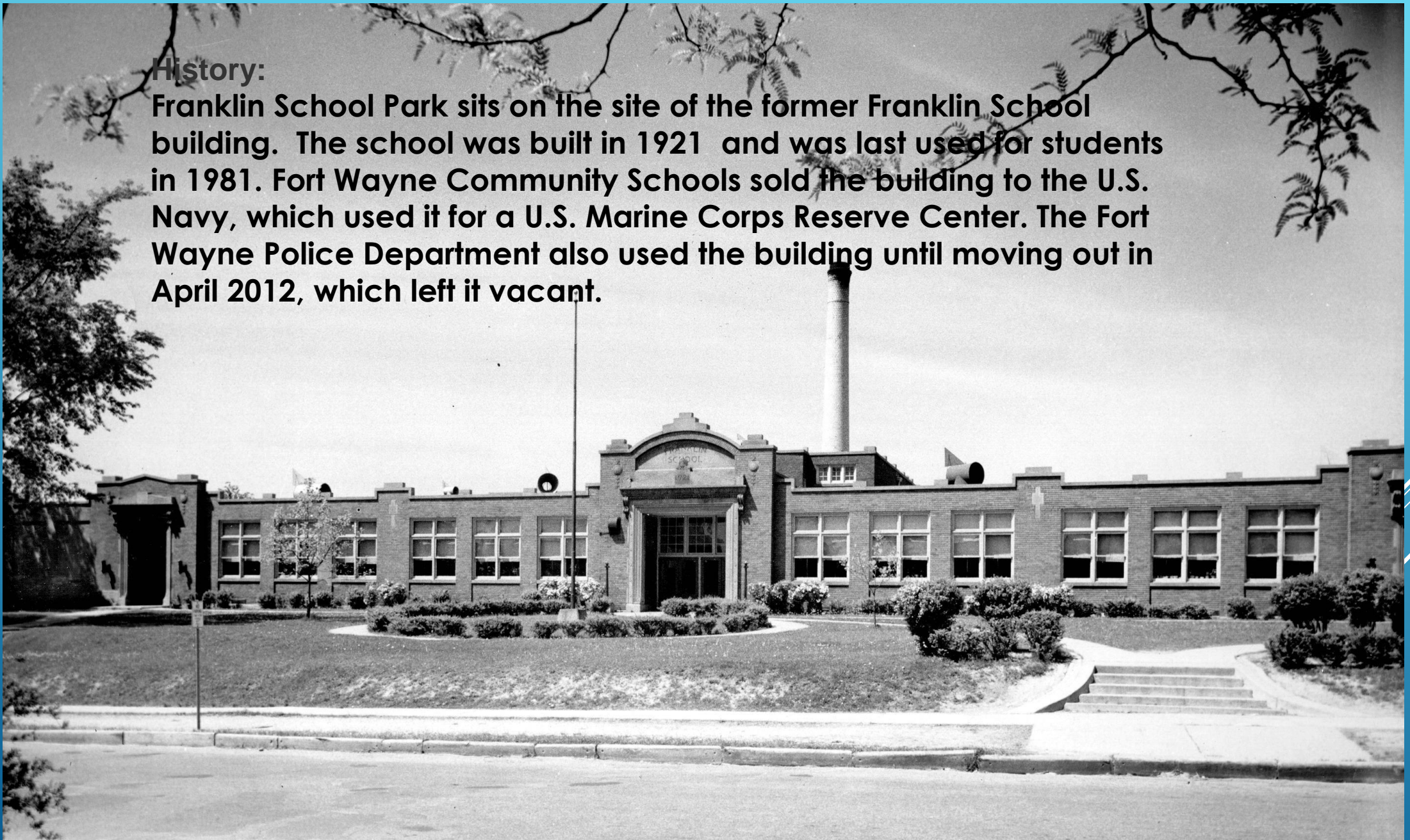
Size in Acres: 4.25



FRANKLIN SCHOOL PARK

History:

Franklin School Park sits on the site of the former Franklin School building. The school was built in 1921 and was last used for students in 1981. Fort Wayne Community Schools sold the building to the U.S. Navy, which used it for a U.S. Marine Corps Reserve Center. The Fort Wayne Police Department also used the building until moving out in April 2012, which left it vacant.







In 2016, The City demolished the building, leaving only the building's entrance arches to be re-used as design elements for the new park.



The Park Today







GREN PARK



Since 1981

Size in Acres: 6.4

GREN PARK

History:

Growing up in the Depression-era Midwest was difficult to say the least, but for the children of a certain north side neighborhood there was always one place where they could go to play away those less than bountiful days. To most it appeared as nothing more than a vacant lot, but to the children who spent their summer days there playing baseball, hide and seek and carefully steering their bicycles through its winding trails, it was much more than that. For them, it was a refuge from the unrelenting siege of the Great Depression. To those children, it was known simply as The Park.

For Jack Gren, one of those children, The Park never lost its place in his heart, even after he grew to adulthood, earned a Ph.D and became a successful business and education consultant. He bought the vacant lot and in 1981 donated it to the citizens of Fort Wayne. It was renamed Gren Park in his honor.

"The Park" is much more than a vacant lot now and has an open air shelter, playground equipment, and a walking path plus plenty of open space so children today can still make memories.



MUCH MORE TO COME...

