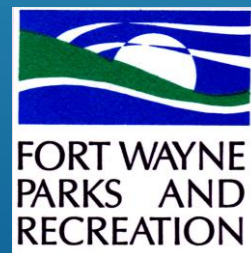
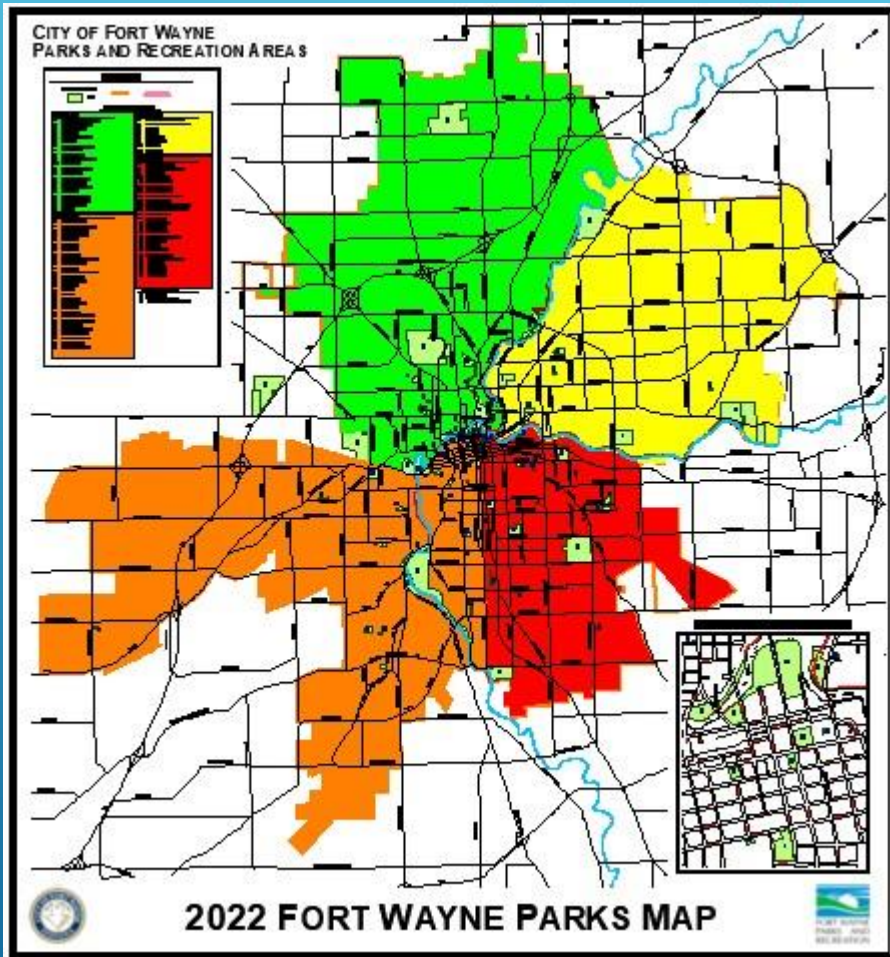


FORT WAYNE BOARD OF PARK COMMISSIONERS

Parks History and Highlights:

- Boone Street Playlot
- Hamilton Park
- Lawton Park



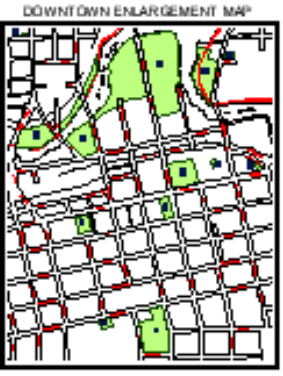
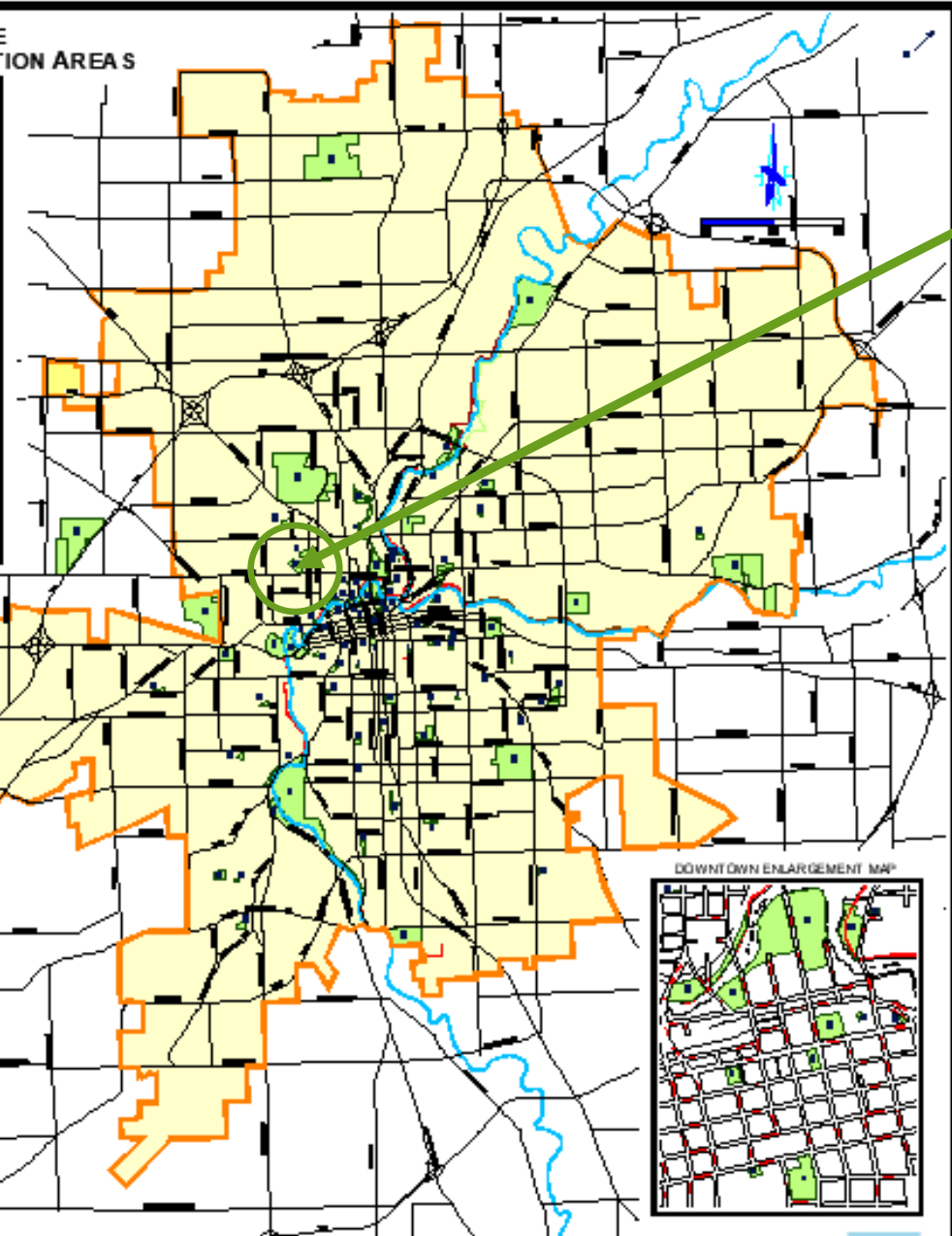
CITY OF FORT WAYNE
PARKS AND RECREATION AREAS

MAP LEGEND

	Public Park
	Public Recreation Area
	City Boundary
	Neighborhood Boundary
	Waterway
	Major Road
	Minor Road
	Utility Line
	Other

Neighborhoods:

1. Adams	11. Northside
2. Alamo	12. Parkside
3. Alamo Heights	13. Parkside West
4. Alamo Park	14. Parkside East
5. Alamo West	15. Parkside North
6. Alamo East	16. Parkside South
7. Alamo North	17. Parkside West North
8. Alamo South	18. Parkside West South
9. Alamo West North	19. Parkside West East
10. Alamo West South	20. Parkside West North East



2022 FORT WAYNE PARKS MAP



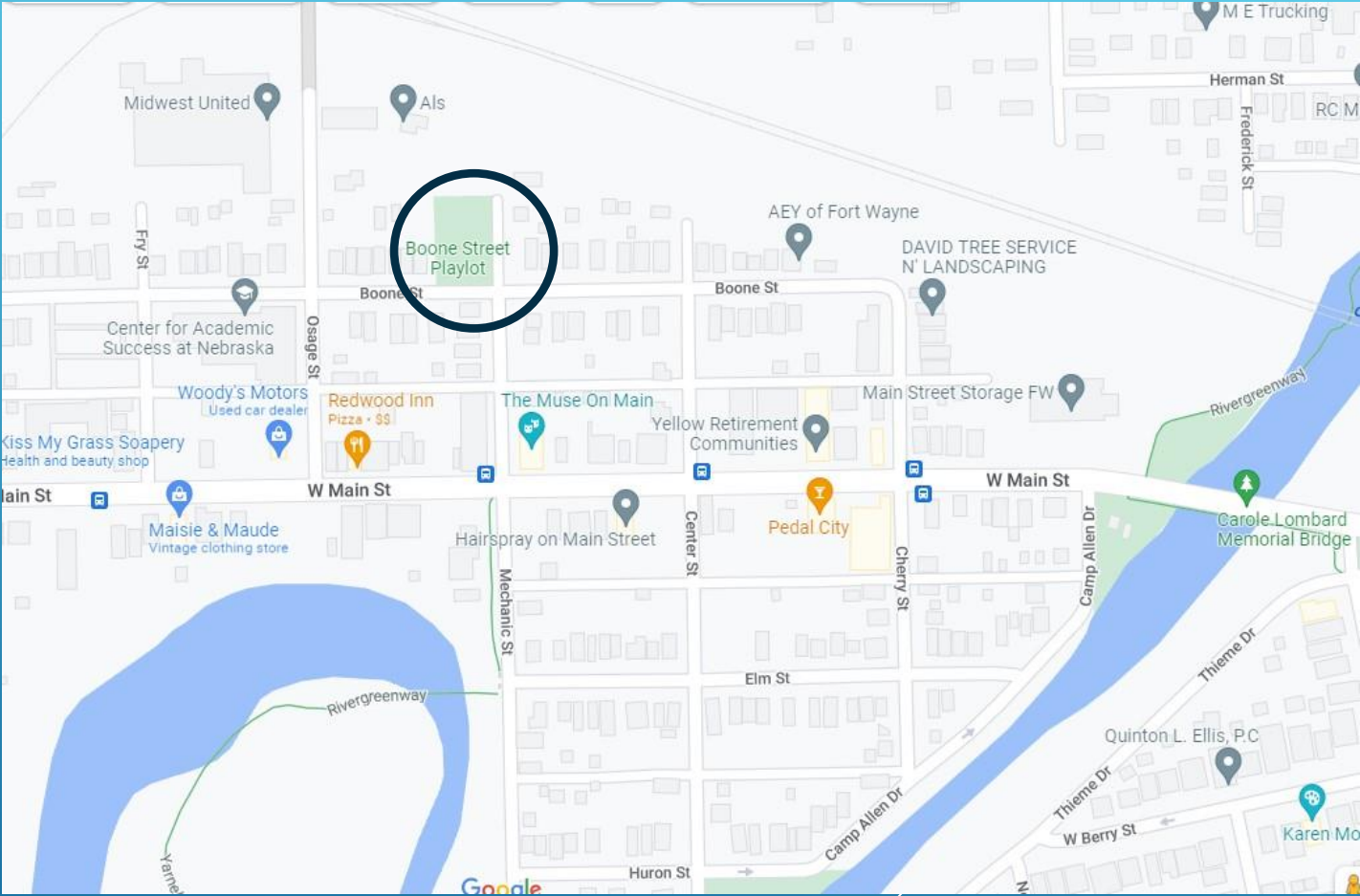
BOONE STREET PLAYLOT

1500 Boone Street



BOONE STREET PLAYLOT

Since 1969
Size in Acres: 0.33



BOONE STREET PLAYLOT

Since: 1969

Size: 0.33 acres

History: The Boone Street Playlot was acquired with Revenue Sharing funds in 1969. During this time there was a big push to create Neighborhood Associations which were given a major role in selecting projects for these funds. Neighborhood Associations determined additional park land should be a priority and thus Boone Street Playlot (as well as other playlots) was developed.

The Boone Street Playlot provides a lot of fun for the little ones with playsets that include multiple slides as well as climbing equipment, a swing set and benches for resting.

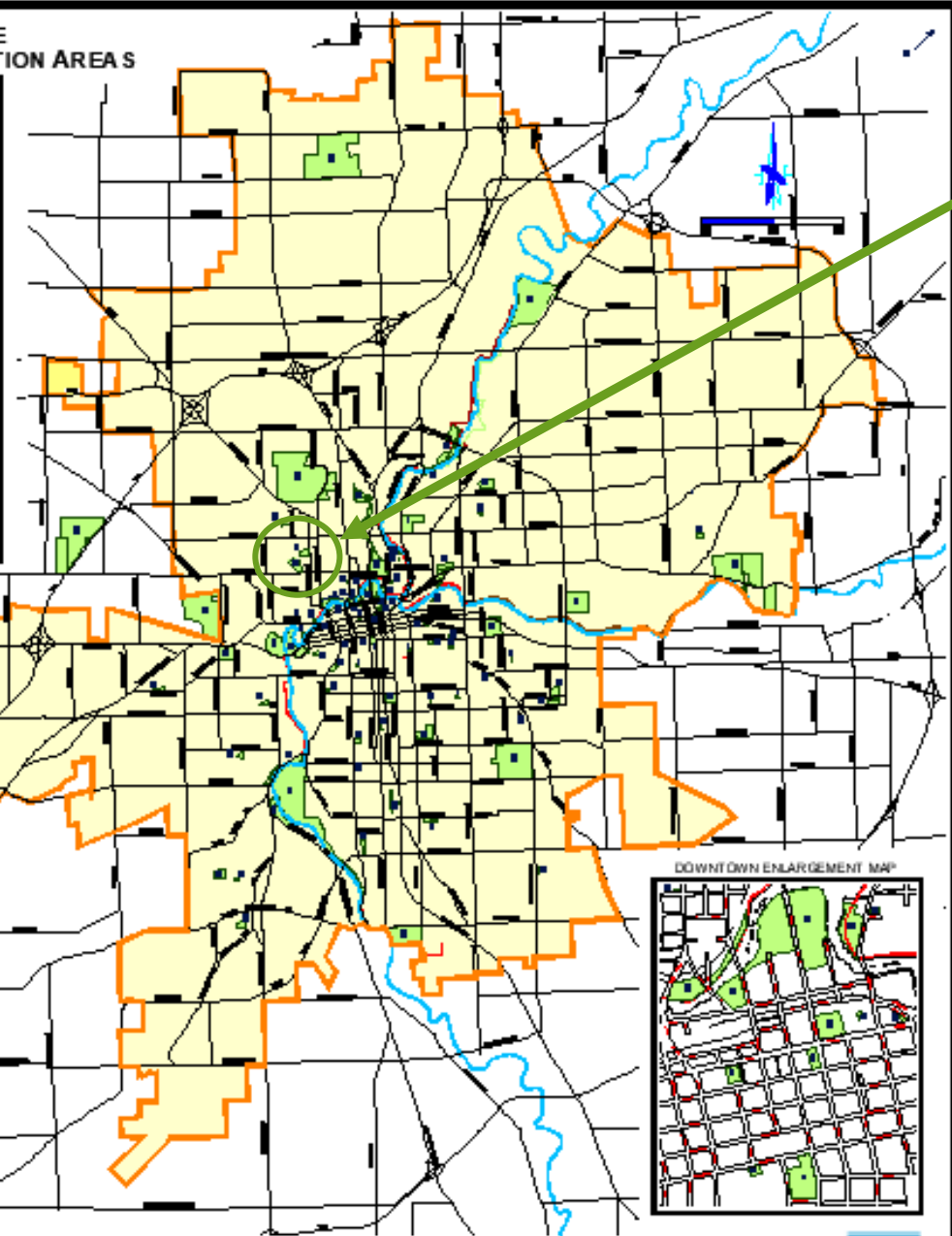


CITY OF FORT WAYNE
PARKS AND RECREATION AREAS

MAP LEGEND

- Green square: Park
- Red line: Trail
- Blue line: Water
- Black line: Road
- Orange outline: City boundary

1. City of Fort Wayne	16. Fort Wayne Park
2. City of Fort Wayne	17. Fort Wayne Park
3. City of Fort Wayne	18. Fort Wayne Park
4. City of Fort Wayne	19. Fort Wayne Park
5. City of Fort Wayne	20. Fort Wayne Park
6. City of Fort Wayne	21. Fort Wayne Park
7. City of Fort Wayne	22. Fort Wayne Park
8. City of Fort Wayne	23. Fort Wayne Park
9. City of Fort Wayne	24. Fort Wayne Park
10. City of Fort Wayne	25. Fort Wayne Park
11. City of Fort Wayne	26. Fort Wayne Park
12. City of Fort Wayne	27. Fort Wayne Park
13. City of Fort Wayne	28. Fort Wayne Park
14. City of Fort Wayne	29. Fort Wayne Park
15. City of Fort Wayne	30. Fort Wayne Park



2022 FORT WAYNE PARKS MAP



HAMILTON PARK

1598 Cherokee Street



HAMILTON PARK

Since 1930

Size in Acres: 16.5



HAMILTON PARK

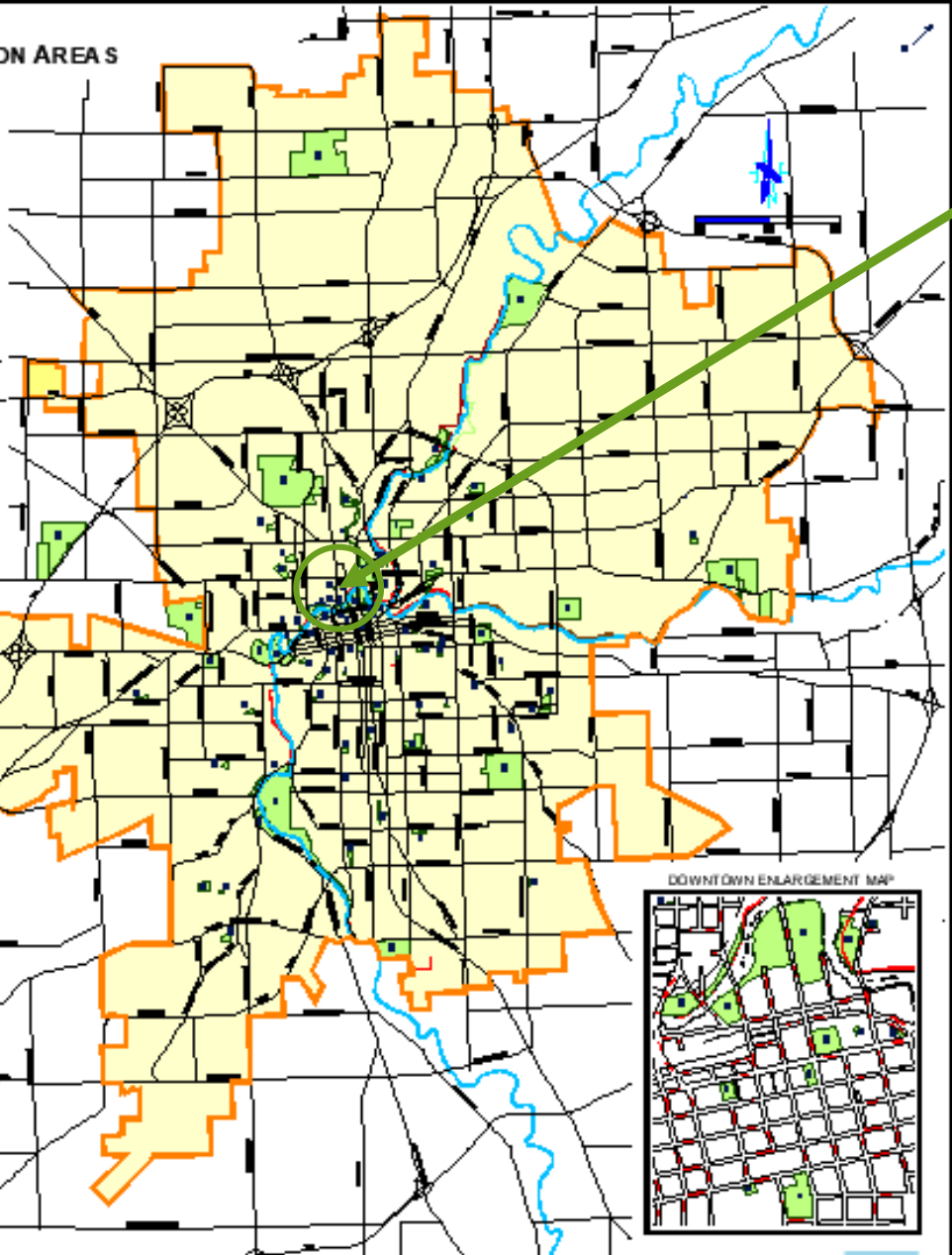
History: In 1930, 16.5 acres was acquired by purchase and donation. The park was called Hamilton Park after the Hamilton Family that had a bank in early Fort Wayne history. In 2000 Hamilton Park was redesigned by City Utilities to act as a water retention basin. In exchange, the park received major improvements including a new baseball diamond, new playground equipment, and a paved trail around the perimeter of the park.



CITY OF FORT WAYNE
PARKS AND RECREATION AREAS

MAP LEGEND

Symbol	Description
[Green square]	Park
[Orange outline]	Recreation Area
[Blue line]	Water
[Black line]	Street
[Red line]	Trail
[Black square]	Building
[Black circle]	Point of Interest

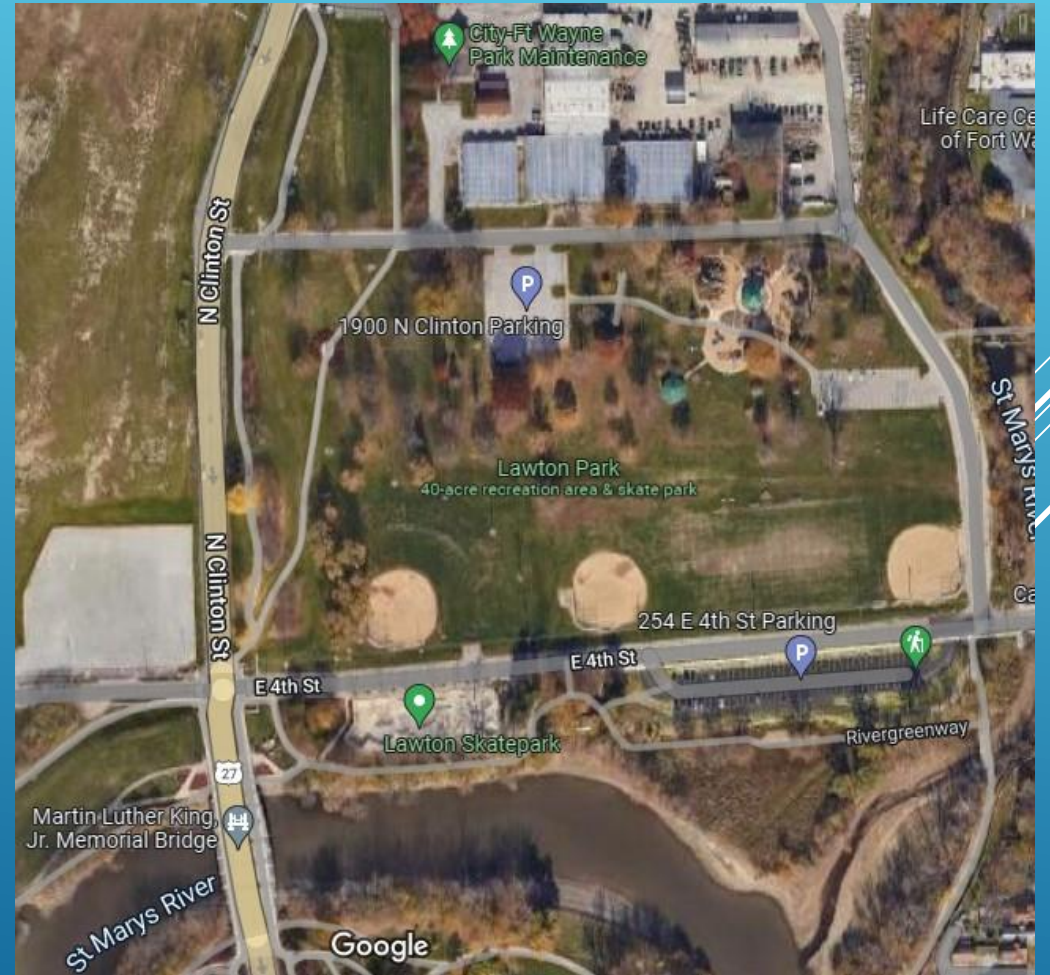


2022 FORT WAYNE PARKS MAP



LAWTON PARK

1900 N. Clinton St.



LAWTON PARK

Since 1866

Size in Acres: 39.33



Rivergreenway Trail

Skate Park

Ball Diamonds

Kid's Crossing
Playground

Greenhouse and Maintenance
Operations

Lawton Park



• LAWTON PARK

History: Lawton Park was purchased to be used as an Indiana State Fairgrounds in 1864, an event that ended up only being held there once in 1865. In 1866 the property joined the city parks system and was called Northside Park until the turn of the century. In 1900 it was renamed in honor of Major-General Henry Lawton. In 1918 Lawton Park had 40 acres and along with Swinney remained one of the city's largest parks for many years. Cannons became part of the Lawton Park scene in 1901. Today, Lawton Park is home to three ball diamonds, the Kid's Crossing Playground, a skate park, the rivergreenway trail, and the Lawton Park Maintenance offices and greenhouses.



MUCH MORE TO COME...

